

MODULE 7

Measurement in Real Life

ANSWER KEY

Part 1: Time
Practice Your Skills

Exercise 1A
Complete.

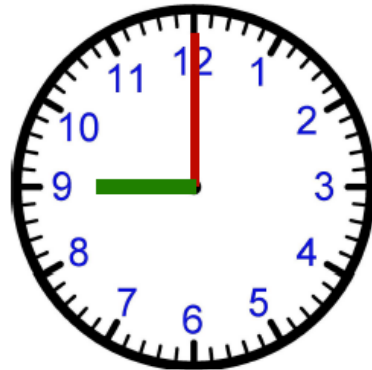
- | | | |
|----------------------|----------------------|-----------------------|
| 1. 2 h = _____ min | 2. 2 d = _____ h | 3. 4 min = _____ s |
| 4. 12h = _____ min | 5. 300s = _____ min | 6. 1 h = _____ s |
| 7. 6 min = _____ s | 8. 1 d = _____ min | 9. 210 min = _____ h |
| 10. 1 d = _____ s | 11. _____ min = 900s | 12. _____ wk = 168h |
| 13. _____ h = 2 d | 14. 280 d = _____ wk | 15. _____ min = 720s |
| 16. 5 d = _____ h | 17. _____ y = 730 d | 18. 10 y = _____ mo |
| 19. _____ mo = 2.5 y | 20. 35 d = _____ wk | 21. 360 min = _____ h |
| 22. _____ wk = 5 y | 23. _____ y = 2 c | 24. 96 mo = _____ y |
| 25. 4 c = _____ y | 26. 84 d = _____ wk | 27. 4 y = _____ mo |

Real Life Math
Exercise 1B Solve.

28. Walter spends 3 weeks in Mexico. How many days is that?
29. Diana watched a movie that was 1 hour 55 minutes. How many minutes was the movie?
30. The airline flight lasted 3 hours. How many seconds was the flight?

31. Mary called her daughter-in-law on Saturday. The call lasted 39 minutes. How many seconds did the call last?

32. Write the time for each clock.



Part 2: Adding and Subtracting Time

Practice Your Skills

Exercise 2A

Add.

1. 2 hours 4 minutes
 + 3 hours 15 minutes

2. 16 minutes 32 seconds
 + 4 minutes 38 seconds

3. 19 hours 55 minutes
 + 2 hours 17 minutes

4. 23 minutes 14 seconds
 + 10 minutes 52 seconds

Exercise 2B

Subtract.

5. 6 hours 35 minutes
 - 2 hours 10 minutes

6. 10 minutes 5 seconds
 - 3 minutes 46 seconds

7. 32 minutes 10 seconds
 - 10 minutes 39 seconds

8. 11 hours 14 minutes
 - 8 hours 22 minutes

Real Life Math

Exercise 2C

Solve.

9. Raymond cooks his special chili for 2 hours 45 minutes. Max cooks his chili 30 minutes longer than Raymond cooks his. How long does Max cook his chili?

10. The drive from Kelley's house to her daughter's house took 3 hours 10 minutes during rush hour traffic. It normally takes 2 hours 15 minutes. How much longer does the drive take during rush hour.

Part 3: Elapsed Time

Practice Your Skills

Exercise 3A

Solve.

1. Brian starts work at 8:45 A.M. He wakes up at 6:30 A.M. How much time does Brian have to get dressed and get to work?
2. Rose wants to watch a late night talk show on TV. It starts at 12:35 A.M. and ends at 1:15 A.M. How long is the show?
3. Krista gets home from work at 7:30 P.M. She relaxes for 55 minutes before she goes to yoga class. What time does she leave for class?
4. Carol put a turkey in the oven at 9:25 A.M. The turkey cooked for 5 hours. What time did she take the turkey out of the oven?
5. Richard left Toronto International Airport at 9:55 P.M. His flight to Winnipeg Manitoba took 2 hours 10 minutes. What time did he arrive in Winnipeg?
6. Justin began his shift at 10:35 P.M. He worked for 7 hours. What time did Justin get off work?
7. Eleanor begins her lunch hour at 11:45 A.M. She leaves work at 4:45 P.M. How long is it between the start of lunch and the end of the work day?

PART 4

Metric Units of Length

Exercise 4A

Choose the better unit to measure each of the following.

- | | | | |
|-------------------------------|-------|-------|-------|
| 1. distance around your hips | a. km | b. m | c. cm |
| 2. width of a notebook | a. m | b. km | c. cm |
| 3. distance to the airport | a. cm | b. km | c. m |
| 4. height of a building | a. m | b. km | c. cm |
| 5. length of a football field | a. cm | b. m | c. km |

Exercise 4B

Complete

- | | | |
|------------------------|------------------------|---------------------|
| 6. 3000 cm = ____ m | 7. 60 m = ____ cm | 8. 108 cm = ____ m |
| 9. 10,500 m = ____ km | 10. 300 m = ____ cm | 11. 27 m = ____ cm |
| 12. 72 cm = ____ m | 13. ____ cm = 4 m | 14. ____ m = 144 cm |
| 15. 252 cm = ____ mm | 16. ____ m = 180 cm | 17. 60 cm = ____ m |
| 18. 84 cm = ____ mm | 19. ____ m = 1 km | 20. 3 km = ____ m |
| 21. 2 m 4 cm = ____ cm | 22. 16 m = ____ cm | |
| 23. 5 m 8 cm = ____ cm | 24. 2,000 m = ____ km | |
| 25. 9 m 2 cm = ____ cm | 26. 7 m 8 cm = ____ mm | |

PART 5

Exercise 5A

Complete using metric measures.

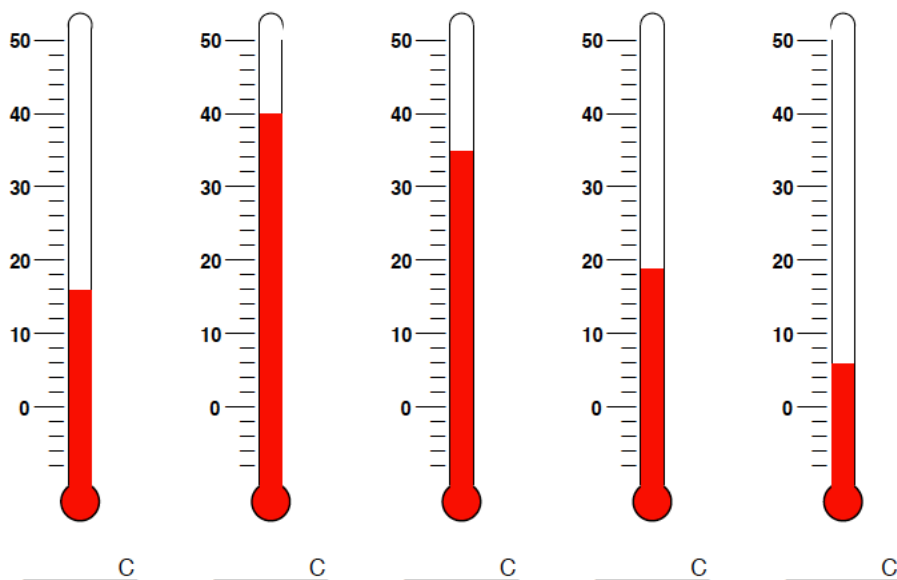
1. Mel weighs about 89 _____.
2. A small carton of juice holds about 1 _____.
3. An envelope weight about 3 _____.
4. A washing machine holds about 190 _____ of water.
5. Jan used about 8 _____ of paint in the living room.
6. The average weight of an African elephant is 7 _____.

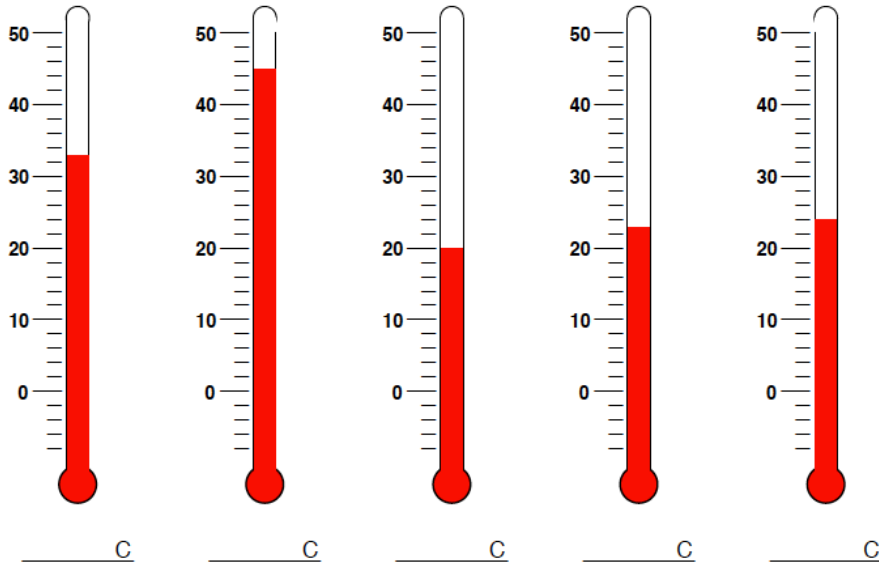
PART 6

Exercise 6A

Write the temperature.

Find the temperature for each thermometer.





Exercise 6B

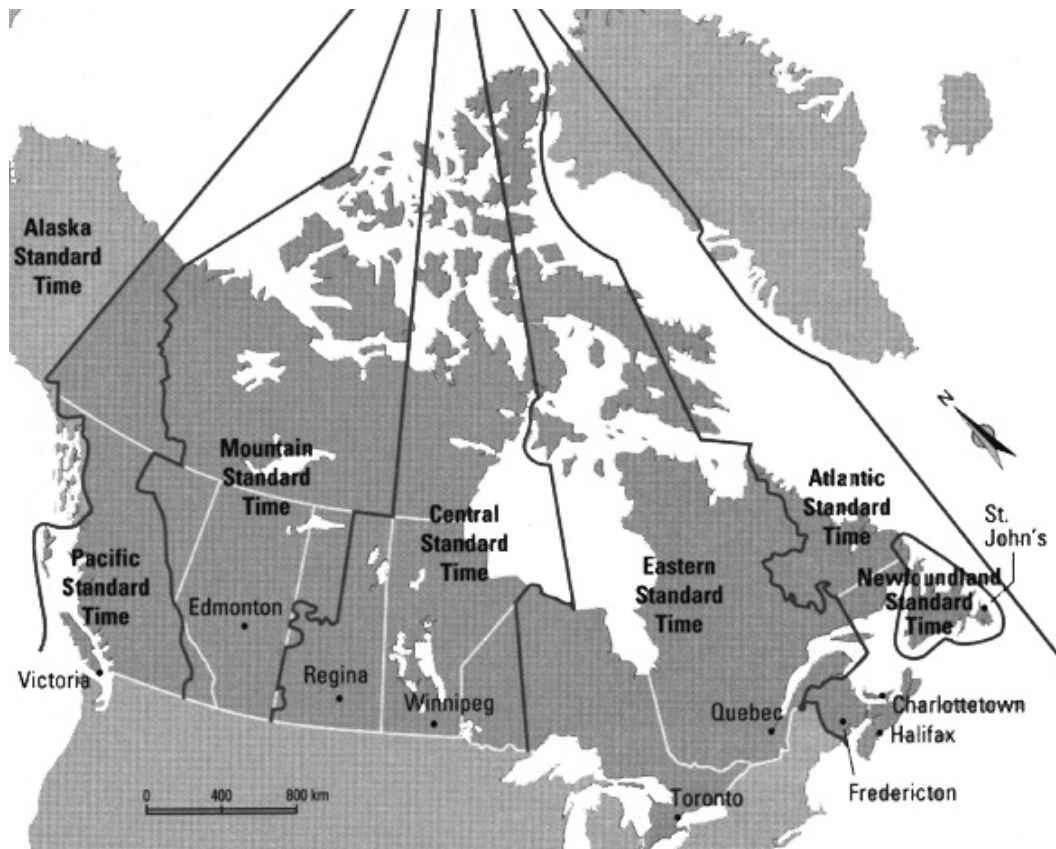
Choose the most reasonable temperature.

- | | | | |
|---------------------|---------|-----------------|----------------|
| 7. hot soup | a. 30°C | b. 85°C | c. 110°C |
| 8. a summer day | a. 85°C | b. -10°C | c. 45°C |
| 9. an autumn day | a. 92°C | b. 61°C | c. 25°C |
| 10. baking potatoes | a. 40°C | b. 240°C | c. 90°C |
| 11. ice cubes | a. 40°C | b. -5°C | c. 400°C |

Real Life Math

Module #7 Task-based Activity: Time Zones

Pacific Time	Mountain Time	Central Time	Eastern Time	Atlantic Time	Newfoundland
10:53 AM	11:35 AM	12:35 AM	1:35 PM	2:35 PM	3:05 PM



When it is 6:00 p.m. in Toronto, what time is it in each city?

- | | | |
|------------------------|-------------------|----------------------|
| 1. Victoria _____ | 2. Halifax _____ | 3. St John's _____ |
| 4. Winnipeg _____ | 5. Edmonton _____ | 6. Quebec City _____ |
| 7. Charlottetown _____ | | |

A newscast is being shown live from Regina at 11:00 p.m. What time is it being seen in each city?

- | | | |
|------------------|----------------------|---------------------|
| 8. Toronto _____ | 9. Fredericton _____ | 10. St John's _____ |
|------------------|----------------------|---------------------|

Module 7: Measurement in Real Life

Review

Complete.

1. _____ s = 7 min
2. 192 h = _____ d
3. 156 wk = _____ y
4. 6 d = _____ h
5. 1 d = _____ min
6. 540 min = _____ h
7. 48 cm = _____ m
8. _____ m = 1 km
9. 3 km = _____ m
10. _____ cm = 1 m
11. 12 cm = _____ mm
12. _____ cm = 8 m

Add or subtract.

13.
$$\begin{array}{r} 6 \text{ hours } 12 \text{ minutes} \\ + 3 \text{ hours } 15 \text{ minutes} \\ \hline \end{array}$$
14.
$$\begin{array}{r} 13 \text{ hours } 40 \text{ minutes} \\ + 3 \text{ hours } 50 \text{ minutes} \\ \hline \end{array}$$
15.
$$\begin{array}{r} 8 \text{ minutes } 31 \text{ seconds} \\ - 3 \text{ minutes } 45 \text{ seconds} \\ \hline \end{array}$$
16.
$$\begin{array}{r} 10 \text{ hours } 5 \text{ minutes} \\ - 8 \text{ hours } 33 \text{ minutes} \\ \hline \end{array}$$

Real Life Math

Solve.

26. Katie gets up at 6:45 a.m. She has to leave for work at 9:00a.m. How long does she have to get ready for work?